

## **Ekonomska škola Vukovar - dvorana**



Operator Nova-lux d.o.o.  
Telephone  
Fax e-  
Mail

## Table of contents

### Ekonomska škola Vukovar - dvorana

Project Cover

Table of contents

**Sportska dvorana**Summary

Luminaire parts list

1

2

4

4





Operator Nova-lux d.o.o.  
Telephone  
Fax e-  
Mail

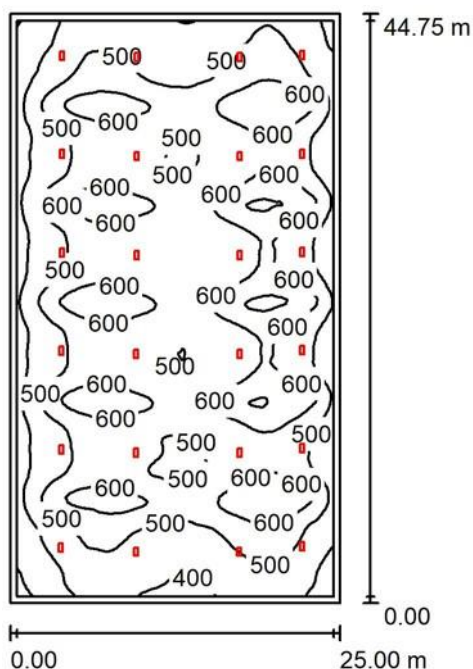
Calculation surfaces (results overview)

5



Operator Nova-lux d.o.o.  
Telephone  
Fax e-  
Mail

## Sportska dvorana / Summary



Height of Room: 10.500 m, Mounting Height: 10.500 m, Maintenance factor:

Values in Lux, Scale 1:575

0.80

Surface	$\rho$ [%]	$E_{av}$ [lx]	$E_{min}$ [lx]	$E_{max}$ [lx]	$u0$
Workplane	/	528	262	723	0.497
Floor	20	518	231	718	0.446
Ceiling	70	104	75	132	0.718
Walls (4)	50	214	89	554	/

### Workplane:

Height: 0.000 m

Grid: 128 x 128 Points

Boundary Zone: 0.500 m

Illuminance Quotient (according to LG7): Walls / Working Plane: 0.403, Ceiling / Working Plane: 0.197.

### Luminaire Parts List

No.	Pieces	Designation (Correction Factor)	$\Phi$ (Luminaire) [lm]	$\Phi$ (Lamps) [lm]	P [W]
1	24		34066	34066	252.0
IP65 (1.000)					
			Total: 817584	Total: 817584	6048.0

Operator Nova-lux d.o.o.  
Telephone  
Fax e-  
Mail

Specific connected load:  $5.41 \text{ W/m}^2 = 1.02 \text{ W/m}^2/100 \text{ lx}$  (Ground area:  $1118.75 \text{ m}^2$ )

## Sportska dvorana / Luminaire parts list

24 Pieces

IP65

Article No.:

Luminous flux (Luminaire): 34066 lm

Luminous flux (Lamps): 34066 lm

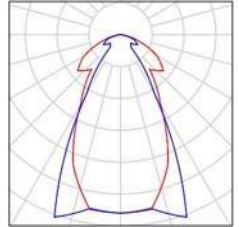
Luminaire Wattage: 252.0 W

Luminaire classification according to CIE: 100

CIE flux code: 74 88 98 100 100

Fitting: (Correction Factor 1.000).

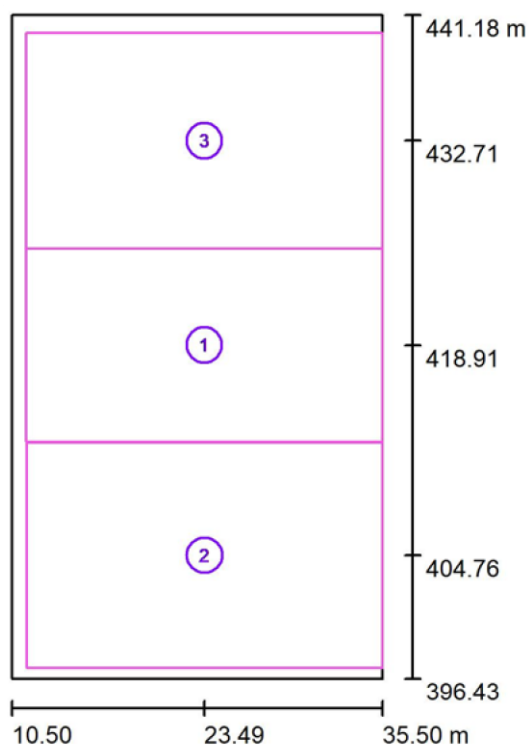
See our luminaire catalog  
for an image of the  
luminaire.





Operator Nova-lux d.o.o.  
Telephone  
Fax e-  
Mail

## Sportska dvorana / Calculation surfaces (results overview)



Scale 1 : 510

### Calculation Surface List

No.	Designation	Type	Grid	$E_{av}$ [lx]	$E_{min}$ [lx]	$E_{max}$ [lx]	$u_0$	$E_{min} / E_{max}$
1	Drugi teren	perpendicular	128 x 64	547	384	723 283	0.702	0.531
2	Prvi teren	perpendicular	128 x 128	515		709 320	0.550	0.400
3	Treći teren	perpendicular	64 x 64	533		713	0.600	0.449

### Summary of Results

Type	Quantity	Average [lx]	Min [lx]	Max [lx]	$u_0$	$E_{min} / E_{max}$
Perpendicular	3	531	283	723	0.53	0.39

